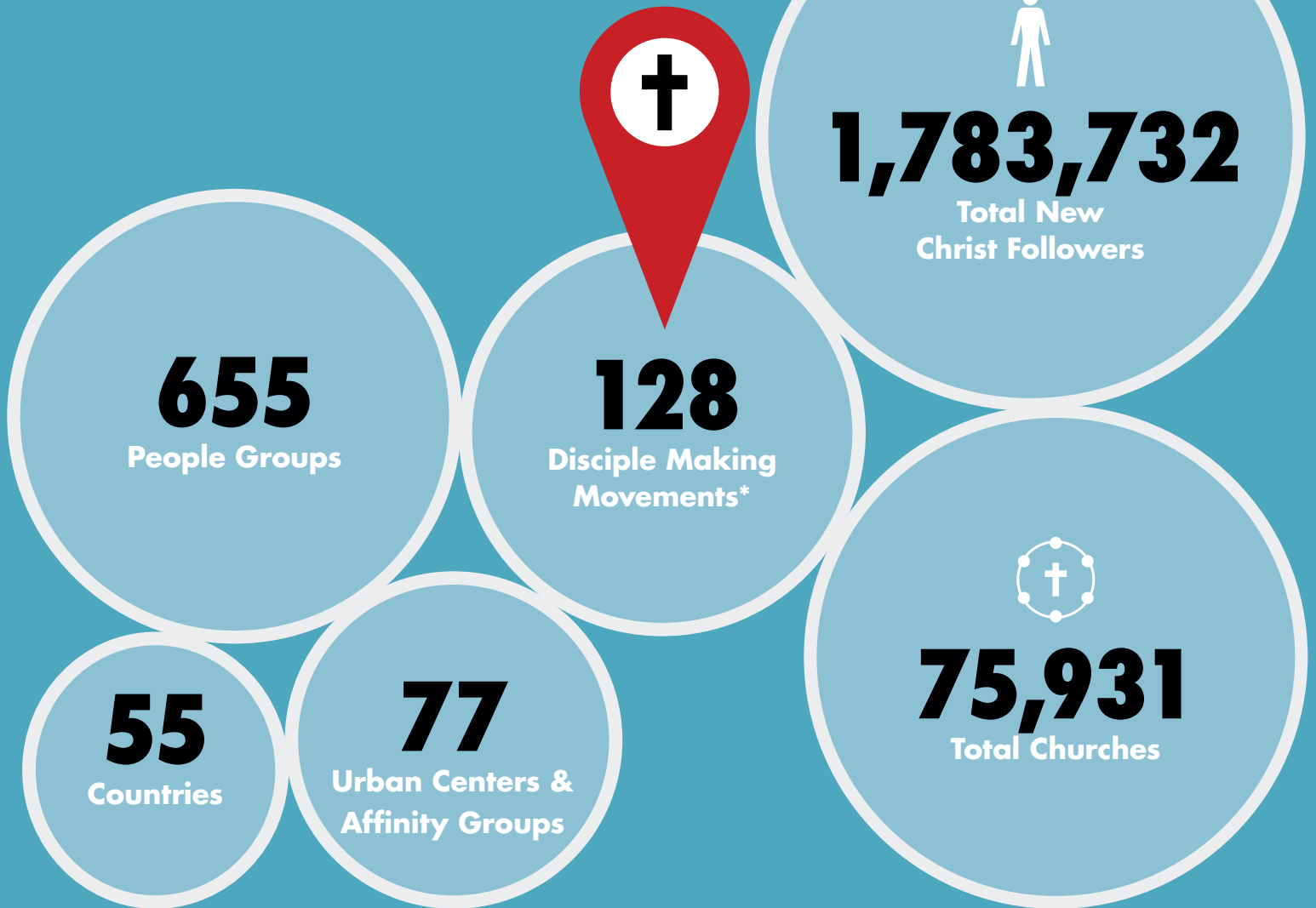


GLOBAL RESULTS

15 YEARS OF WATCHING GOD AT WORK
MARCH 2005 - MARCH 2020

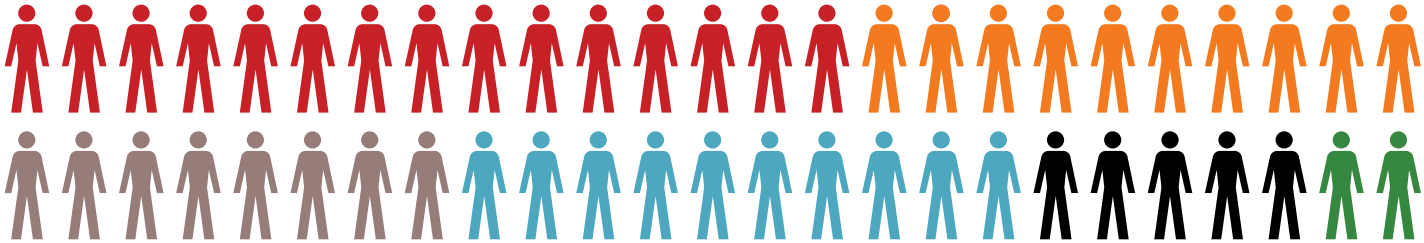


*DMM = 100 new churches that have multiplied to the 4th generation

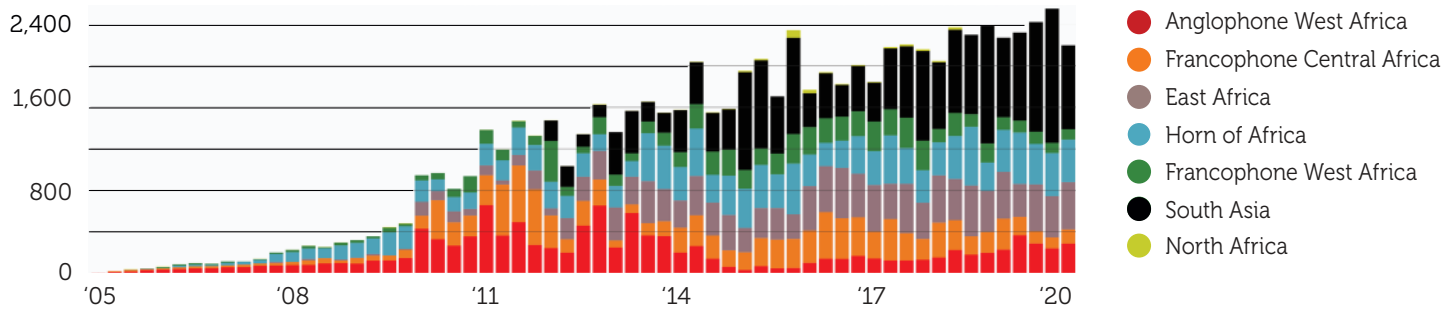
REGIONAL BREAKDOWN OF 1,783,732 NEW CHRIST FOLLOWERS

EACH ICON REPRESENTS APPROXIMATELY 2% OR 35,675 NEW CHRIST FOLLOWERS

2,002 in North Africa 

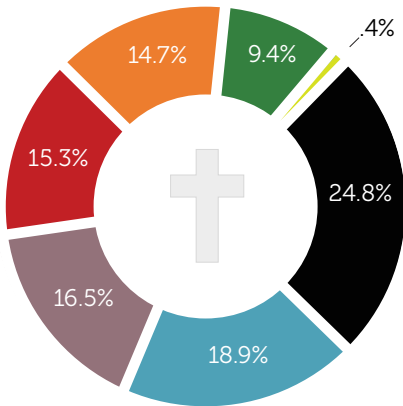


NEW CHURCHES SHOWN BY REGION PER QUARTER



TOTAL NEW CHURCHES

Breakdown of 75,931 new churches since 2005 by region



NEW CHURCHES

Global church planting trends from Q1 2005 til Q1 2020

